

luxurious details

hyatt regency seattle

PROJECT FOCUS



sustainable, hospitable design

PROJECT: Hyatt Regency Seattle

LOCATION: Seattle, Washington

DEVELOPER: R.C. Hedreen Co.

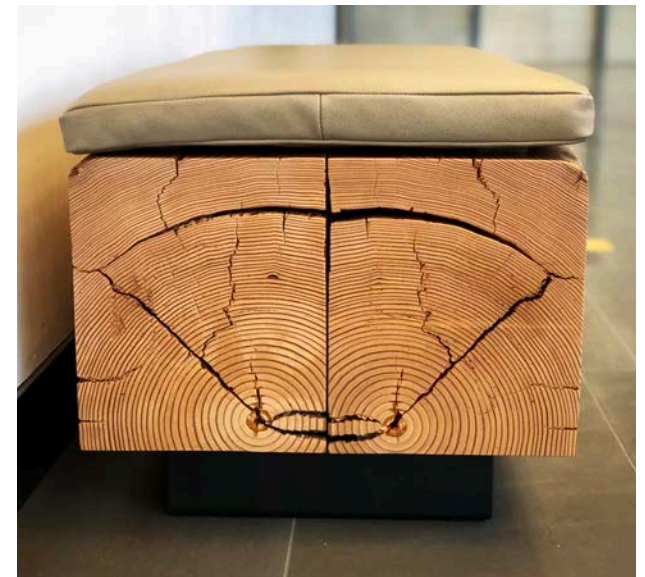
DESIGN: Zena Design Group, LMN Architects,
Meyer Wells

LEED STATUS: Certified LEED New Construction
Gold

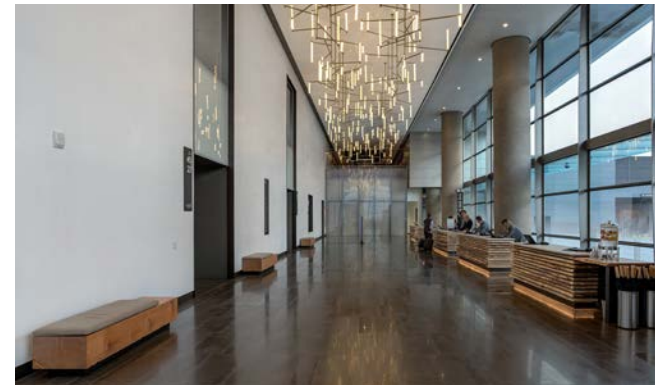
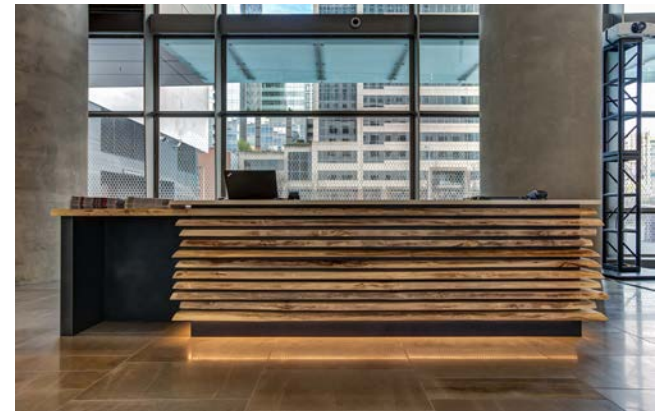
OVERVIEW: With 1260 guest rooms, over 40 meeting areas and 45 floors, the new Hyatt Regency Seattle required a sizable commitment to communication, design partnership and furniture production.

Working with R.C. Hedreen on their parameters for the largest hotel in the PNW, and Zena Design Group on the design, we created over 80 custom pieces for the lobby, cafe, lounge, restaurant, reception halls and private suites.

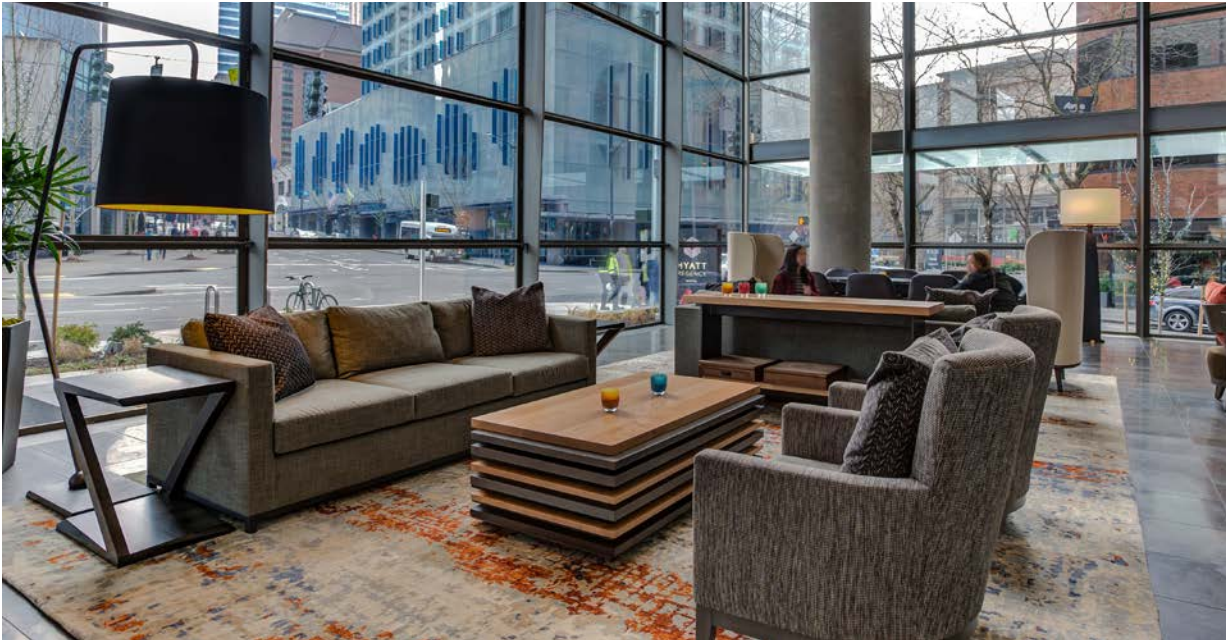
We were chosen for our custom manufacturing capabilities, our experience working with wood and our commitment to sustainable design.



reception & concierge desks



Crafted from local Maple and reclaimed Fir beam stock, the reception desks, concierge desk and reception benches were left clear to celebrate the character of the wood and provide warmth to the otherwise cool entrance hall. The pieces are approachable and beg to be touched - a beautiful first impression.



lobby tables

To welcome visitors and guests from the moment they step inside the hotel, the design relied on natural and local elements.

The cool color palette is a direct homage to the Seattle skies. We acquired this with our Hematite, Slate and Clear finishes, present on all our pieces throughout the space.



lounge tables



For the hotel's lounge, the design team wanted something dramatic and warm, with several options for meeting and enjoying the live entertainment.

The bar height Strap Tables paired with stacked Maple coffee tables and community tables provide different vignettes. Beautiful planked Ash tables finished in Hematite are inviting and luxurious.

penthouse suites tables

To convey a sense of home away from home, the penthouse suites were each furnished with a 10 person community table. The tables, composed of planked Maple, were finished in our Hematite finish and given a square edge to deliver a sleek yet inviting look.

The custom X base allows plenty of leg room and continues the geometric theme seen throughout the hotel. The end result is a luxurious piece that rivals the view outside the 45th floor windows.





custom details

Stacked planked Maple coffee tables finished in Clear, Hematite and Slate to match the color pallet of the hotel.

CNC cutout console tables and plywood bases to match the geometric shapes theme seen throughout the space.

Our custom capabilities gave us the flexibility to create whatever concepts the design team wanted. It was important that the pieces told the hotel's story, from reception to lounge to penthouse suite.

planked maple



The star of this project is planked Maple by far. Used in several square edge and live edge tables in the lobby, fourth floor lounge, restaurant and penthouse suites as well as the stunning stacked live edge reception desks, the PNW native material brings warmth and a sense of place to the space. Tables and desks were left clear or finished with our standard Hematite finish to produce a stunning display of nature's beautiful work.



45
27

425.402.8001
info@meyerwells.com
meyerwells.com

meyer wells
ART FROM WOOD
A Coriander Designs Company